

seattle

THE PREMIER
SEATTLE MONTHLY

EAT + DRINK

ARTS + EVENTS

SHOPPING + FASHION

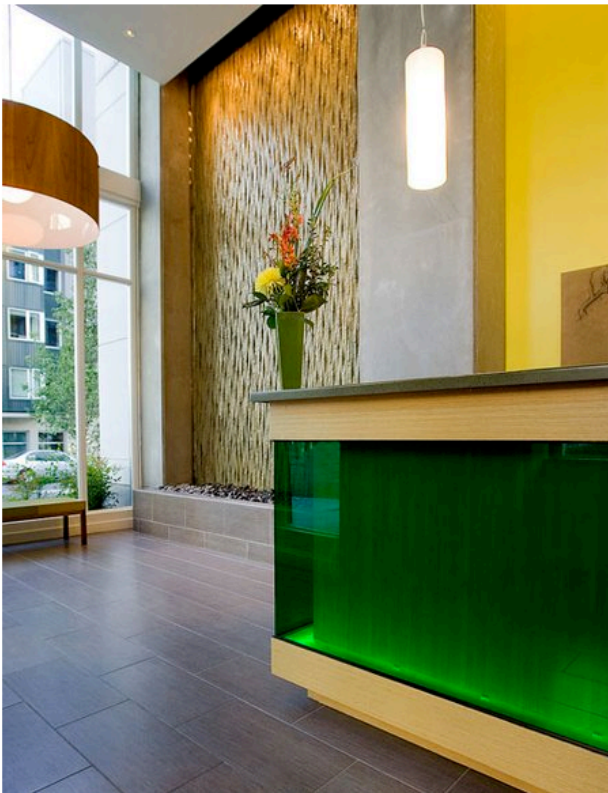
BEAUTY

NW HOME

NEIGHB

Top Interior Designers: Fresh Four

Share       Buzz up!



The Parc condos in Belltown are a chic yet serene locale to come home to, with 17-foot high sandstone water wall, wood veneer accent walls and a standout green glass concierge desk



Robin Chell of Robin Chell Design (3417 NW 68th St., Seattle; 206.760.0849; robinchelldesign.com), who has been designing for 18 years, often looks to Japan for inspiration from its Wabi-Sabi aesthetic of seeing the beauty in imperfection. Her warm, modern style often incorporates pieces from local craftspeople, such as Meyer Wells, known for transforming reclaimed urban trees into sleek modern furniture. For a recently completed kitchen nook, Chell and her team of two other designers worked with Seattle's Kerf Design to create a space-smart mid-century modern table and cabinetry

that fit perfectly with a baby blue booth. **Expert Advice:** Chell encourages clients to be realistic about the amount of time their project will take, and to make sure their designer has a good system for accounting for time spent. "People see these design shows on TV and they think you just snap your fingers and wave your wand and it happens," says Chell. Start out by clearly identifying goals, budget and style and have an open mind when exploring options.